

Supplemental Narrative

Sustainable Design: Our revised design includes benches, picnic tables, and trash bins made from recycled materials. The interpretive sign will be wildlife related and is reflected on the plans. There will be a water bottle filling station, not a drinking fountain.

Site Plan: The site plan has been codified.

Page 1 shows park elements, landscaping (trees and shrubs), pathways, and parking.

Page 2 shows the outhouse removal.

Page 3 shows landscaping, interpretative wildlife sign, picnic tables, bike racks, 2 unisex restrooms, mechanical room, interpretive sign, pathways, and parking layout.

Match Requirement: Match increased to 40-49% with access paths and parking area.

Universal Design: The interpretive sign will use large font, be high contrast, and utilize a QR code for more information. 50% of the recycled picnic tables will have 2 sides to pull up and all UA/ADA picnic tables will be affixed to the concrete so they cannot be moved. All picnic tables will be inside the perimeter to provide for clear lanes of travel. There are 7 parking spaces and 2 will be ADA. 2 bathrooms will both be unisex facilities. The path around the facility is 6' wide. The pathway to the island is 6' wide.

NMTPFinalPlanAdopted.pdf reuploaded

Items changed in Section B: Project Funding and Explanation of Matching Sources: The city added in the \$60,000 for paths and parking which increased the match and total project, but not the grant ask-see updated Resolution from September 5, 2023, uploaded.

Items changed in Project Details:

1. Revised construction cost based on recent other project estimate
2. Reduced cost of water bottle filling station
3. Changed cost for picnic tables as 50% are 2 sided ADA
4. Increased cost for interpretive wildlife sign based on recent other project
5. Added Paved Parking Lot
6. Added Paved ADA Parking Spaces
7. Reduced landscaping cost, added 20 trees, others low shrubs and flowers
8. Added 2 bike racks
9. Added 1 trash bin

NOTES:

- 1) NUMBER OF PARKING STALLS:
STANDARD: 7
ADA ACCESSIBLE: 2
(1 VAN ACCESSIBLE)
- 2) MAINTAIN 15' CLEAR DISTANCE OF
OVERHEAD ELECTRIC (TYP.) AND 8' CLEAR
DISTANCE OF UNDERGROUND ELECTRIC
(TYP.)

PROPOSED ADA VAN
ACCESSIBLE
PARKING SPOT

PROPOSED ADA
PARKING SPOT

PROPOSED 6' WIDE
SIDEWALK CONNECTING
PROPOSED PARKING AND PAVILION WITH
BATHROOM FACILITIES
TO ROTARY PARK, DESIGNED TO ADA REQUIREMENTS

PROPOSED 6' WIDE
SIDEWALK CONNECTING
PROPOSED PARKING AND PAVILION WITH
BATHROOM FACILITIES
TO ROTARY PARK, DESIGNED TO ADA REQUIREMENTS

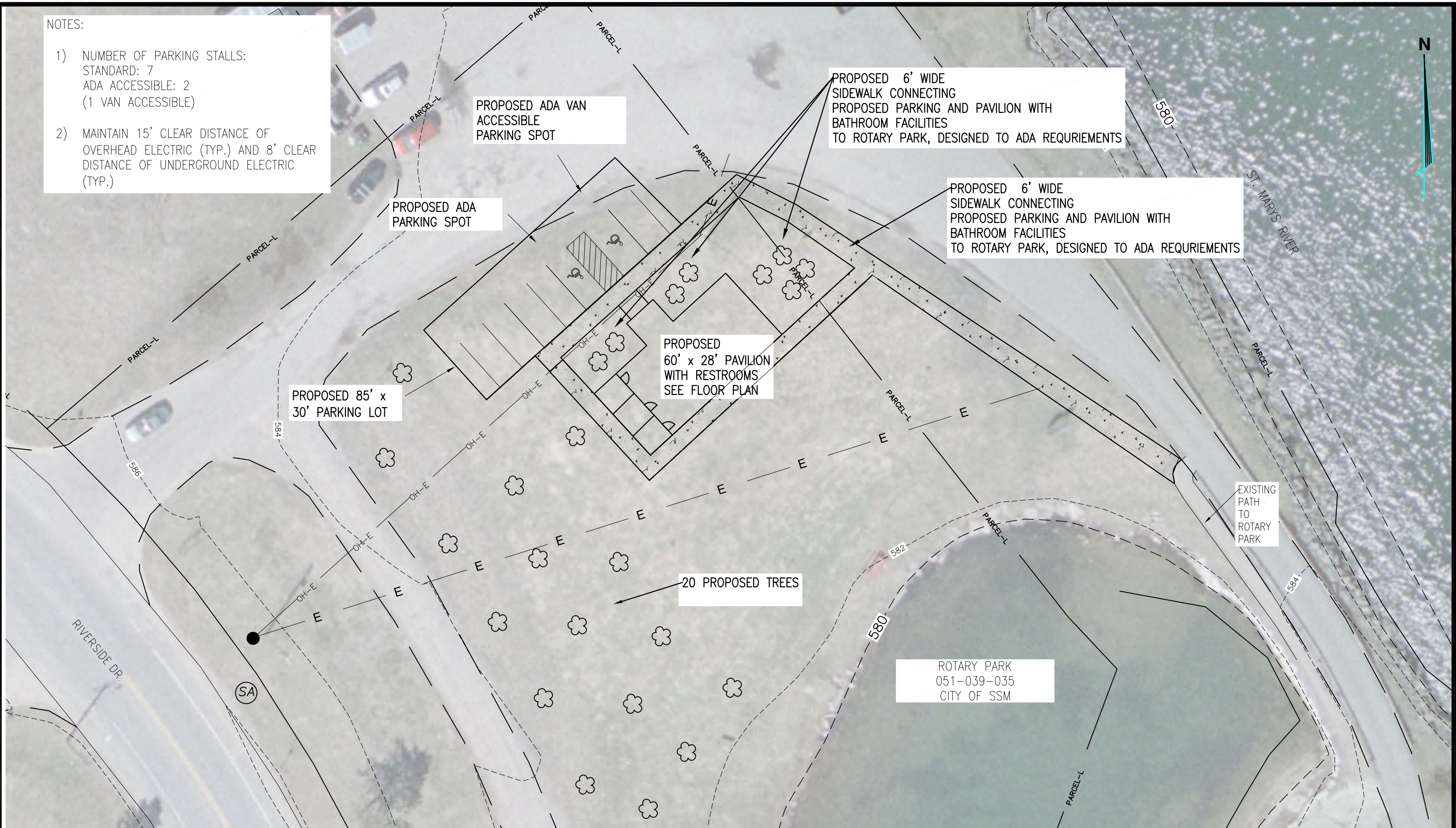
PROPOSED 85' x
30' PARKING LOT

PROPOSED
60' x 28' PAVILION
WITH RESTROOMS
SEE FLOOR PLAN

20 PROPOSED TREES

EXISTING
PATH
TO
ROTARY
PARK

ROTARY PARK
051-039-035
CITY OF SSM



**CITY OF
SAULT STE. MARIE, MI
ENGINEERING DEPARTMENT**

225 E PORTAGE AVENUE
SAULT STE. MARIE, MI 49783
(906) 632-5730 FAX: (906) 635-5606

SUBJECT:

**ROTARY PARK
PROPOSED PAVILION
SITE PLAN**

REVISIONS

NO.	BY	DATE

DRAWN BY: L . MILLER

APPROVED: D. BOYLE

SCALE: H: 1" = 30' V: NA

FILE: Rtry-Prk-Pavilion_SitePlan.DWG

DATE: 09/28/2023

DRAWER

SHEET

1 OF 3



ROTARY PARK
051-039-035
CITY OF SSM

ROTARY PARK

EXISTING ROTARY PARK
BATHROOMS
TO
BE
DEMOLISHED



**CITY OF
SAULT STE. MARIE, MI
ENGINEERING DEPARTMENT**

225 E PORTAGE AVENUE
SAULT STE. MARIE, MI 49783
(906) 632-5730 FAX: (906) 635-5606

SUBJECT:

ROTARY PARK
PROPOSED PAVILION
REMOVAL PLAN

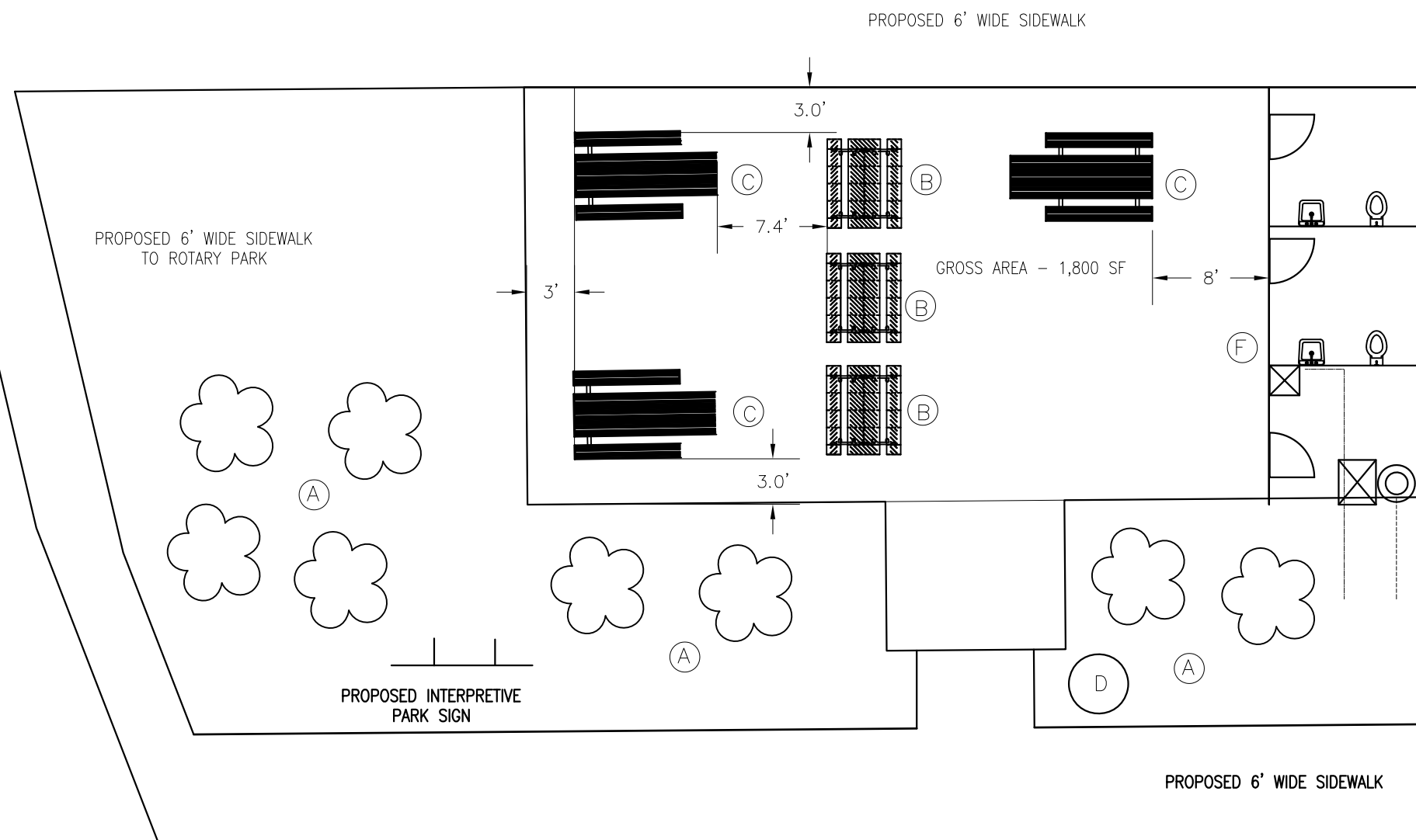
REVISIONS

NO.	BY	DATE

DRAWN BY: L . MILLER
APPROVED: D. BOYLE
SCALE: H: 1"=30' V: NA
FILE: Rtry-Prk-Pavilion_SitePlan.DWG
DATE: 09/28/2023

DRAWER

SHEET
2 OF 3



- NOTES:

- 1) MAINTAIN A AISLE CLEAR DISTANCE OF 3 FOOT WHEN PLACING PICNIC TABLES (TYPICAL). PLACE TABLES 8 FEET FROM RESTROOMS
- 2) PICNIC TABLE TO BE MADE OF RECYCLED PLASTIC
- 3) TRASH CAN FACILITIES TO BE MADE OF RECYCLED FEATURES
- 4) CROSS SLOPE OF SIDEWALK TO BE NO MORE THAN 2 PERCENT (TYP.)

- (A) LANDSCAPING –
LOW GROWTH BUSHES WITH
WILDFLOWERS
- (B) STANDARD 72" x 60" GROUND
MOUNTED PICNIC TABLE, MADE OF
RECYCLED MATERIAL
- (C) STANDARD GROUND MOUNTED ADA
ACCESSIBLE PICNIC TABLE,
MADE OF RECYCLED MATERIAL
- (D) TRASH RECEPTACLE, MADE OF
RECYCLABLE MATERIAL
- (E) PARKING BLOCK MADE WITH
RECYCLED RUBBER
- (F) DRINKING FOUNTAIN / WATER
BOTTLE REFILLING STATION
- (G) BIKE RACK